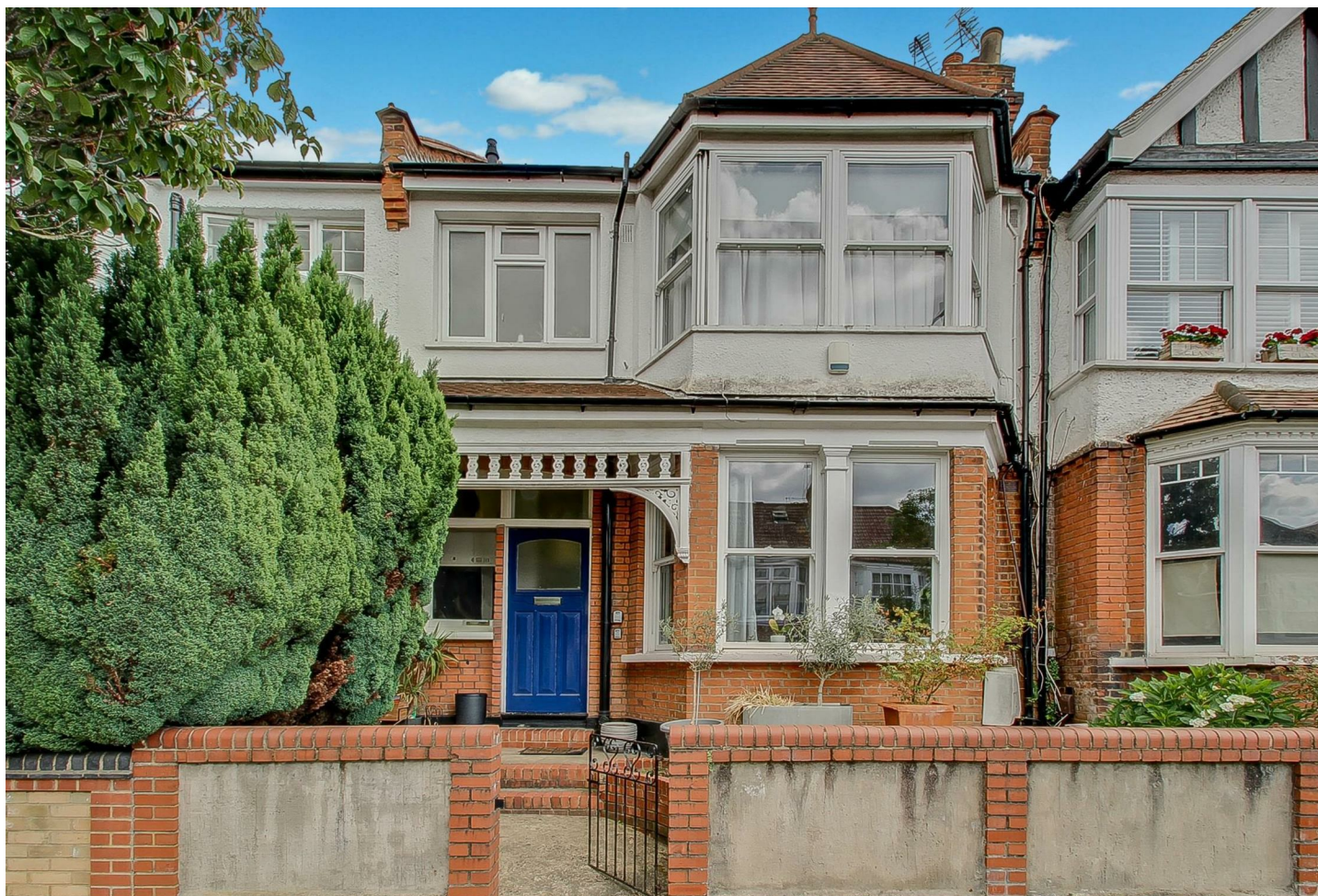


est 1979

 Jeremy
Leaf & Co.



|., 9a Gainsborough Road, London, N12 8AA

£439,950

- Bathroom
- Long lease - 122 years
- Two Bedrooms
- £250 p.a. Ground Rent
- Open Plan Kitchen / Dining Area
- Own Garden
- Service Charge £200 pcm
- 0.3 Miles to Tube Station
- Utility Area
- Council Tax Band C

863 High Road, London, N12 8PT
020 8446 4295

property@jeremyleaf.co.uk
<https://www.jeremyleaf.co.uk/>

9a Gainsborough Road, London N12 8AA

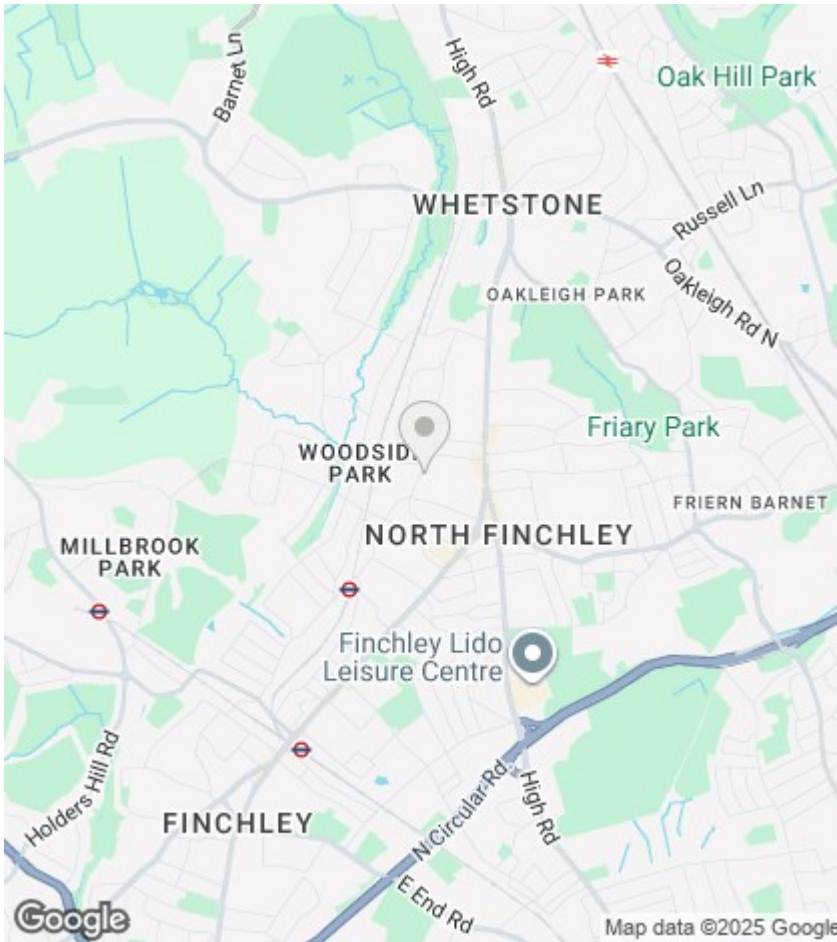
A bright and characterful two-bedroom ground floor flat boasting an open-plan kitchen/diner, a practical utility area, and the added benefit of its own private garden. Situated just 0.3 miles from Woodside Park Tube station, this property is within easy reach of North Finchley's town centre amenities and transportation links. Council Tax Band C.



Council Tax Band: D







Directions

Viewings

Viewings by arrangement only. Call 020 8446 4295 to make an appointment.

EPC Rating:

C

Energy Efficiency Rating		Current	Potential
Very energy efficient - lower running costs			
(92 plus)	A		
(81-91)	B		
(69-80)	C	69	78
(55-68)	D		
(39-54)	E		
(21-38)	F		
(1-20)	G		
Not energy efficient - higher running costs			
England & Wales		EU Directive 2002/91/EC	

